

Nambucca River and Warrell Creek (Upper Reaches) Weekend Netting

152°40'0"E

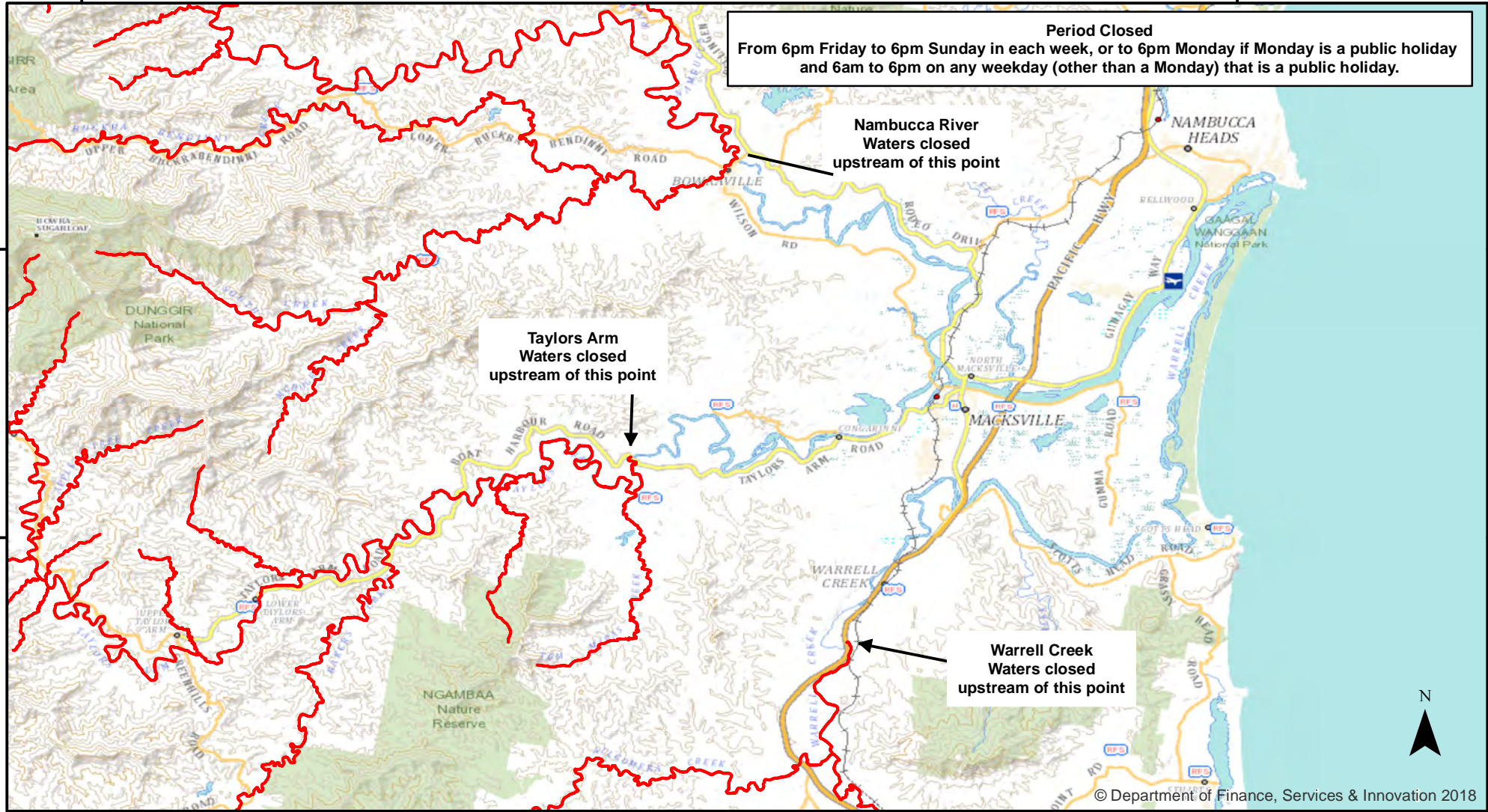
153°0'0"E

Period Closed
From 6pm Friday to 6pm Sunday in each week, or to 6pm Monday if Monday is a public holiday and 6am to 6pm on any weekday (other than a Monday) that is a public holiday.

Nambucca River
Waters closed
upstream of this point

Taylors Arm
Waters closed
upstream of this point

Warrell Creek
Waters closed
upstream of this point



© Department of Finance, Services & Innovation 2018

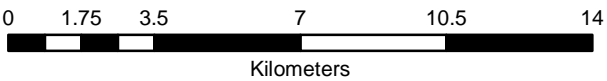


NSW DPI 9 August 2018
Coordinates are shown in WGS84

Notice to Map Users
Additional closures may apply. Primary Industries and its employees disclaim all liability for any actions or consequences arising from the use of this information. This map is not to be used for navigational purposes as it is indicative only and not guaranteed to be free of error or omission.

Closed Waters
The whole of the non-tidal waters of the Nambucca River and Warrell Creek and their tributaries, upstream from Lanes Bridge, Bowraville (Nambucca River arm), Boat Harbour Bridge (Taylors Arm) and the Pacific Highway Road Bridge at Cockburns Lane (Warrell Creek arm) to its source.

Prohibited Method
Nets, other than a landing net.



© Department of Finance, Services & Innovation 2018