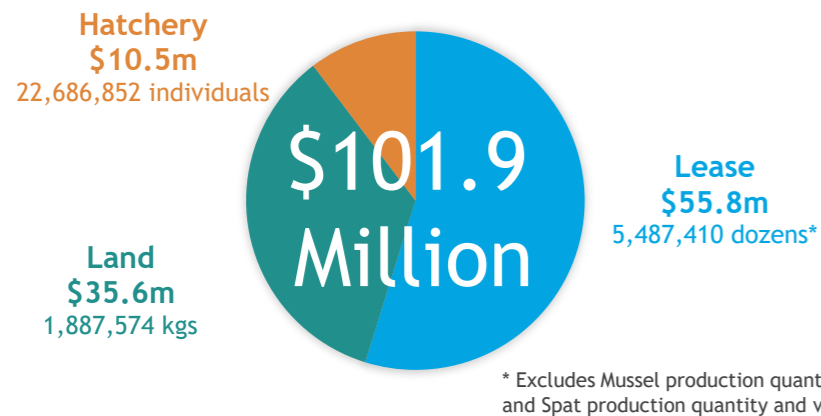


Production, Value and Sectors

Value of Production is total production multiplied by the average farm-gate price which is the net price of the product when it leaves the farm, after marketing costs have been subtracted.

Value of Production (\$m) and Production (quantity) of NSW Aquaculture, by sector, 2021/22



Lease Based Aquaculture Sector

Includes aquaculture produced in leased areas of public estuarine waters allowing stock to grow off natural food sources and conditions, without the need to add or supplement food sources. Key species include Oysters (Sydney Rock, Pacific, Native & Oysters) and Mussels.

Land Based Aquaculture Sector

Includes the aquaculture operation of extensive land based (natural food sources & conditions), intensive land based (supplemental feeding & water aeration) and fish out farms (members of the public pay for the right to fish). Key species include Murray Cod, Prawns, Trout and Silver Perch.

Hatchery Based Aquaculture Sector

Includes aquaculture produced by breeding of juveniles of various species including both fish and invertebrates. Usually undertaken on land but may be on leased based public waters. Key species include Shellfish, Prawn, Murray Cod, Golden Perch, Silver Perch and Trout.

Value of Nitrogen and Phosphorus Remediation by Lease Based Aquaculture

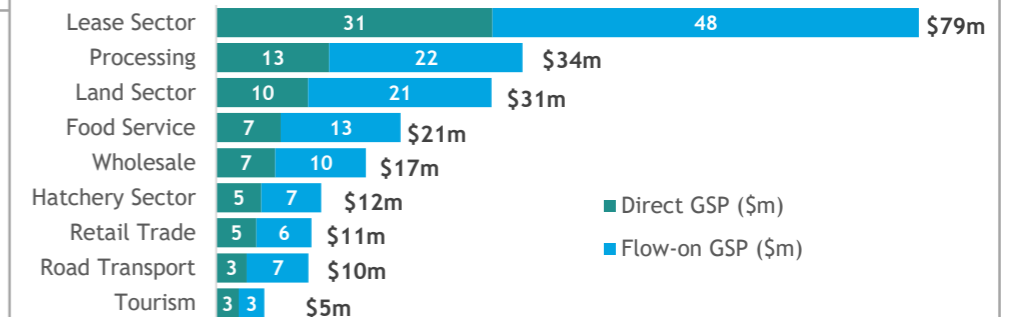
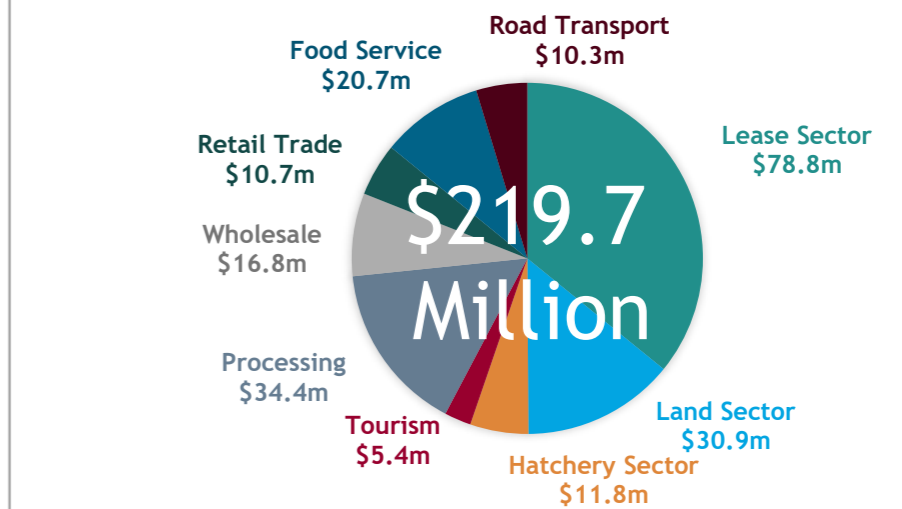
\$5.6 million

There are several ecosystem services provided by Aquaculture including provisioning, regulating, supporting and cultural service types. One of these services is removal of nutrients by Lease Based Aquaculture in NSW, which was valued at an estimated \$5.6 million in 2021/22.

Contribution to New South Wales by Sector

Gross State Product

NSW Aquaculture contribution to Total GSP (\$m), by sector, 2021/22



Contribution to New South Wales

These indicators include direct activity in aquaculture firms and downstream firms (i.e. processing, transport, retail and food service) as well as flow-on effects or indirect activity in other sectors of the economy through purchases of inputs and the employment of labour.

Gross State Product

\$219.7m

contributed to Total GSP in 2021/22

Contribution to Gross State Product (GSP) is a measure of the net contribution of an activity to the state economy.

Employment

2,321 fte

Total Jobs supported in 2021/22

Contribution to employment is a measure of the number of jobs supported, in terms of the number of full-time equivalent jobs.

Household Income

\$145.1m

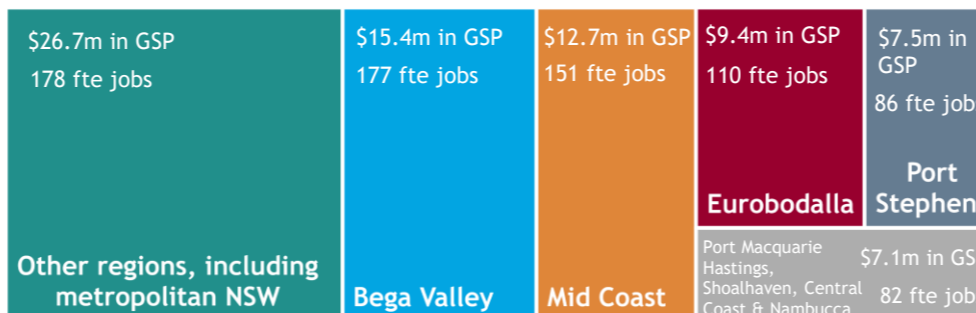
contributed to Total Household Income in 2021/22

Household income is a component of GSP and is a measure of wages and salaries, drawings by owner operators and other payments to labour.

Contribution to Regions of New South Wales, by Sector

Lease Based

NSW Aquaculture contribution to Total GSP (\$m), and Total Employment (fte) by LGA, 2021/22



Land Based

NSW Aquaculture contribution to Total GSP (\$m), and Total Employment (fte) by LGA, 2021/22



Hatchery Based

NSW Aquaculture contribution to Total GSP (\$m), and Total Employment (fte) by LGA, 2021/22



Employment

NSW Aquaculture contribution to Total Employment (fte), by sector, 2021/22

